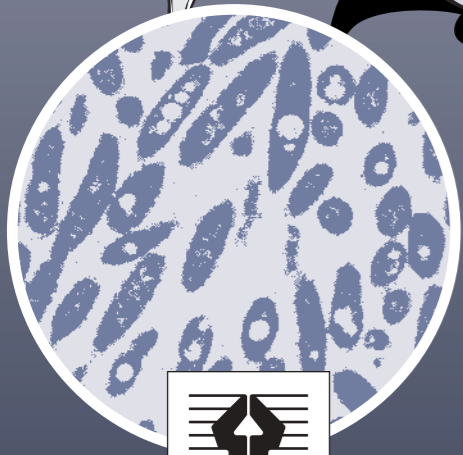


CONTROLLING LEGIONELLA IN NURSING AND RESIDENTIAL CARE HOMES



CONTROLLING LEGIONELLA IN NURSING AND RESIDENTIAL CARE HOMES



LOW RISK HIGH RISK

OTHER GUIDANCE AVAILABLE:

- ▼ *Health and safety in care homes* HSG220 HSE Books 2001 ISBN 0 7176 2082 4
- ▼ *Health Guidance Note Safe hot water and surface temperatures* Prepared by NHS Estates 1992 ISBN 0 11321404 9 HMSO
- ▼ *An introduction to the control of legionella bacteria in water systems* Video HSE Books 2003 ISBN 0 7176 2580 X

HSE priced and free publications are available by mail order from:
HSE Books, PO Box 1999, Sudbury, Suffolk CO10 2WA
Tel: 01787 881165 Fax: 01787 313995
Website: www.hsebooks.co.uk
(HSE priced publications are also available from good bookshops
and free leaflets can be downloaded from HSE's website:
www.hse.gov.uk.)

For information about health and safety ring HSE's Infoline
Tel: 08701 545500 Fax: 02920 859260
e-mail: hseinformationservices@natbrit.com or write to
HSE Information Services, Caerphilly Business Park,
Caerphilly CF83 3GG.

This leaflet contains notes on good practice which are not compulsory but which you may find helpful in considering what you need to do.

© Crown copyright This publication may be freely reproduced, except for advertising, endorsement or commercial purposes. First published 6/97. Please acknowledge the source as HSE.

INDG253

Reprinted 6/04

C75

Printed and published by the Health and Safety Executive

POPULATION
▼ Fit, healthy -
eg adolescents in a residential care home

HOT WATER SYSTEM

- ▼ Well maintained, clean and properly insulated
- ▼ Purpose-built - storage cisterns and calorifiers correct size for intended use
- ▼ Frequently used
- ▼ Regularly cleaned and maintained

POPULATION
▼ Elderly, weakened immune system

POTENTIAL FOR DROPLET FORMATION

- ▼ Showers or spray from taps

HOT WATER SYSTEM

- ▼ Infrequently maintained, dirty cold water tanks poorly insulated or tanks in warm part of building
- ▼ Adapted/converted system - oversized cisterns or calorifiers, long runs of pipe
- ▼ Infrequently used - eg pipes may contain lukewarm water for long periods (deadlegs)
- ▼ Materials and fittings which support the growth of Legionella
- ▼ Hot water heater or storage tanks holding water below 50°C or not heating contents uniformly

INTRODUCTION

This leaflet is intended to help you control risks from *Legionella* and is based on existing HSE guidance. One way of controlling *Legionella* is to keep water hot, which you are probably doing for other reasons already. Hot water brings a risk of scalding which you must also control.

The leaflet focuses on risks from hot and cold water systems. If you have cooling towers or other water systems, such as whirlpool baths or hydrotherapy pools, that could also spread *Legionella* you must consider these as part of your risk assessment.

WHAT IS LEGIONELLA?

Legionella is a type of bacteria which is common in natural and artificial water systems. They can survive at low temperatures and thrive at temperatures between 20°C and 45°C. They are killed at higher temperatures and this is the main method used for their control in domestic water systems.

Legionellosis is the name given to a group of pneumonia-like illnesses caused by *Legionella* - the most serious and well-known being Legionnaires' disease. Legionnaires' disease is serious in elderly and infirm patients; pneumonia is a common cause of death in people over 70. Infection is caused by breathing small droplets of water contaminated by the bacteria. Anyone can get infected but those most at risk include elderly people, smokers, alcoholics, and those suffering from cancer, diabetes, chronic respiratory disease or kidney disease.

WHAT DO I HAVE TO DO ABOUT LEGIONELLA?

Under the Health and Safety at Work etc Act 1974 you have a duty to consider the risks from *Legionella* that may affect people in your care. The Control of Substances Hazardous to Health Regulations 1994 say that you must assess the risks to all staff and patients from bacteria like *Legionella* and take suitable precautions.

ASSESSING THE RISK FROM LEGIONELLA

The figures on the back page show some of the things you need to take into account when assessing the risk of *Legionella*.

CONTROLLING THE RISK

Design

The system should be designed to avoid the conditions that favour the growth of *Legionella*:

- ▼ ensuring pipework is as short and direct as possible;
- ▼ ensuring adequate insulation of pipes and tanks;
- ▼ using materials that do not encourage the growth of *Legionella*; and
- ▼ protecting against contamination, eg fitting storage tanks with lids.

Operation and maintenance

You should ensure that your system is operated to minimise growth of *Legionella*. One way of doing this is to store hot water above 60°C and distribute it at above 50°C. Water systems need to be routinely checked and inspected by a competent person and the risk assessment should be reviewed regularly.

If you don't need hot water for other reasons, eg for the laundry, you might consider using alternative *Legionella* control methods. This may avoid the need for very high water temperatures which carries a risk of scalding. Alternatives include ionisation, UV light, chlorine dioxide, ozone treatment or regular thermal disinfection of the system. These will need proper installation, maintenance and monitoring. You should seek professional advice when considering new or alternative treatment systems.

SCALDING

A survey of nursing homes and residential care homes, carried out by HSE, has shown that under 20% of homes keep water at temperatures over 60°C just to control *Legionella*. Most homes

keep water hot for other reasons including: kitchen and laundry use, to ensure proper boiler operation, or to take account of long pipe runs.

Where water comes out of taps at temperatures above 43°C there is a risk of scalding. This is especially so for whole-body immersion in baths and showers of elderly people, and people with disabilities (who may not be able to recognise high temperatures and respond quickly).

You have a legal duty to assess the risk of scalding and to adopt appropriate measures to control it. Your approach will depend on the needs and capabilities of patients or residents. For capable people, eg staff, a warning notice may be sufficient. But if vulnerable people can get access to baths or showers, HSE strongly advises the fitting of thermostatic mixing valves that prevent water being discharged at more than 43°C. Valves should be fitted according to manufacturer's instructions and need regular maintenance.

WHERE CAN I GET MORE INFORMATION AND HELP?

Practical guidance on your duties and guidance on technical aspects of assessing and controlling the risk from *Legionella* can be found in the Approved Code of Practice and guidance produced by the Health and Safety Commission, *Legionnaires' disease. The control of legionella bacteria in water systems. Approved Code of Practice and guidance* L8 (Third edition) 2000 HSE Books ISBN 0 7176 1772 6.

You can also obtain advice from:

- ▼ environmental health departments of local authorities;
- ▼ your local HSE Office;
- ▼ nursing home and residential care home registration units;
- ▼ professional plumbers and heating engineers.

Quantity

Legionnaires' disease. The control of legionella bacteria in water systems
ISBN 0 7176 1772 6 £8.00

Total cost

Name _____

Address _____

Post code _____ Tel no _____

I enclose a cheque/PO* for £ _____ made payable to 'HSE Books'

Please debit my AMEX/Mastercard/Visa* with the amount of £ _____

Card no

Start date (AMEX only) _____

Expiry date _____

Cardholder's name _____

Signature _____

Please charge my HSE Acc. No:

My reference is:

* delete as appropriate

Return this order form to:

HSE Books, PO Box 1999, Sudbury, Suffolk CO10 2WA

Tel: 01787 881165 Fax: 01787 313995.

HSE publications are also available through any good bookseller.

